



Makhraj of letters .



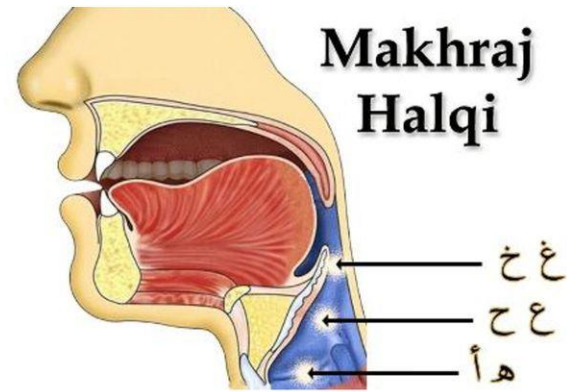
+ LETTERS OF THE THROAT

■ There are six letters of the throat.

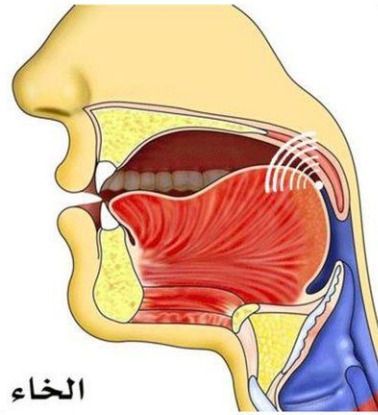
■ ع خ

■ ح ع

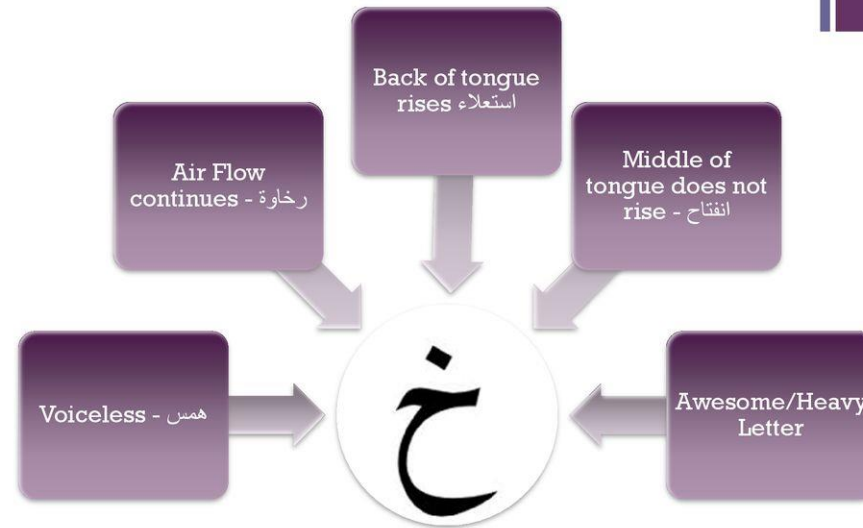
■ ه ا



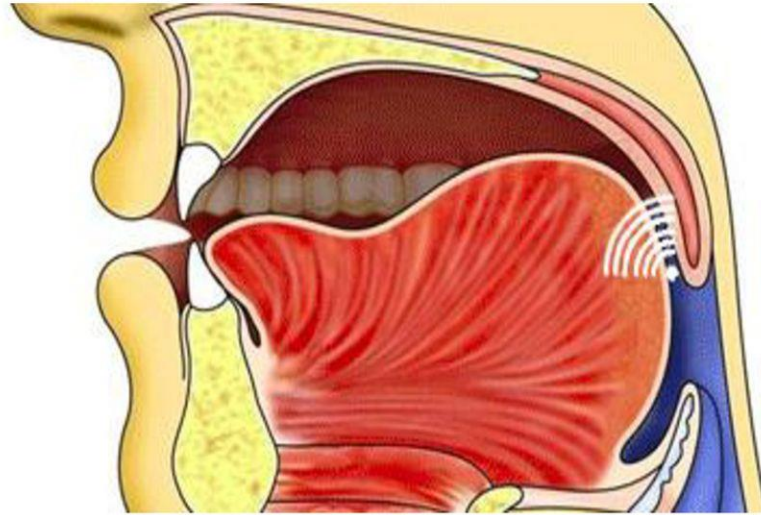
+ حروف الحلق - Letters of the throat
أدني الحلق - مخرج - خ
Top of the
throat



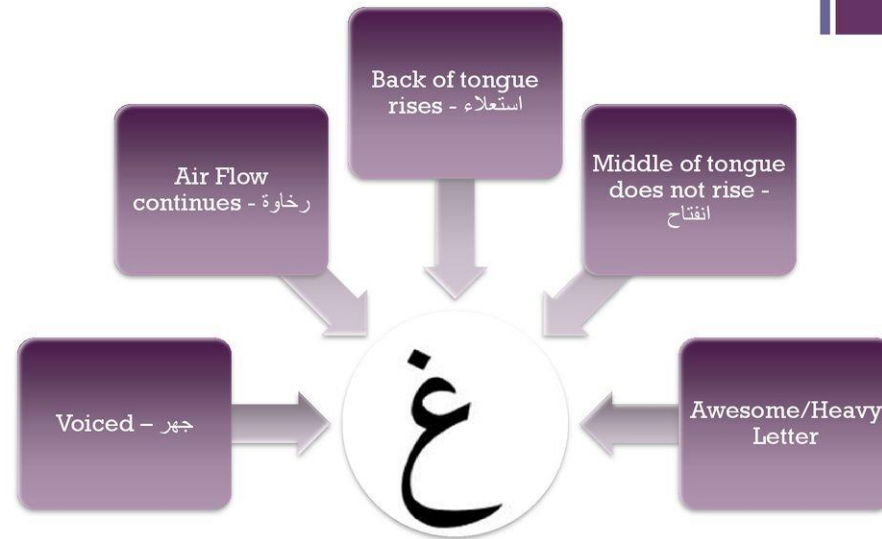
+ SIFAAT OF خ



+ غ - أذني الحلق - مخرج - Top part of the throat



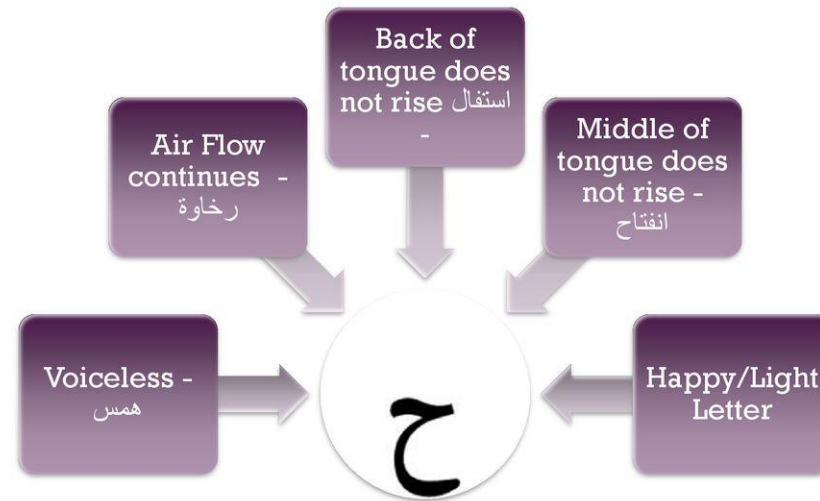
+ SIFAAT OF غ



+ Middle of the throat - وسط الحلق - مخرج - ح



+ SIFAAT OF ح

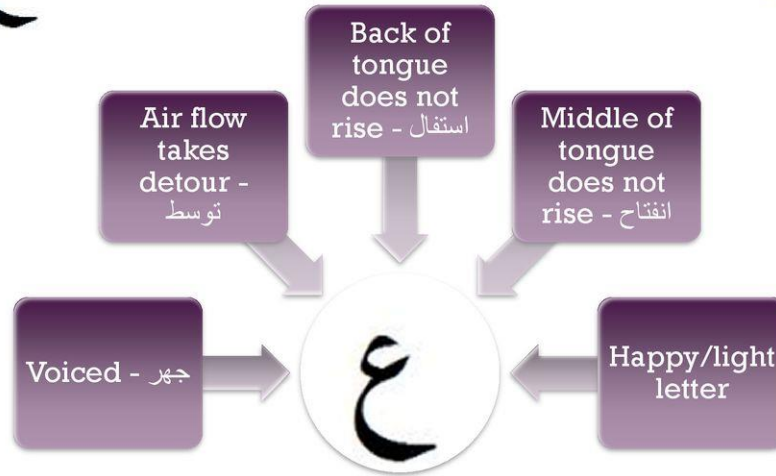


وسط الحلق - مخرج - ع +

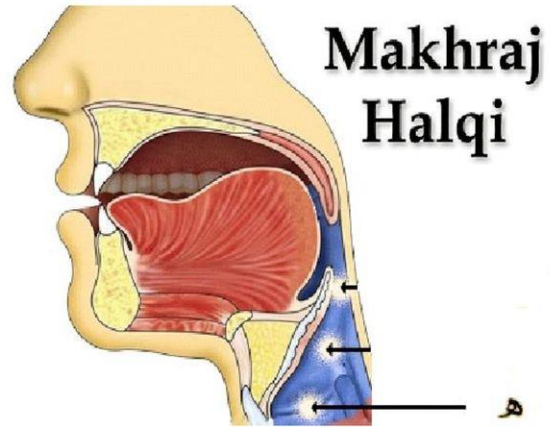


+ SIFAAT OF ع

ع



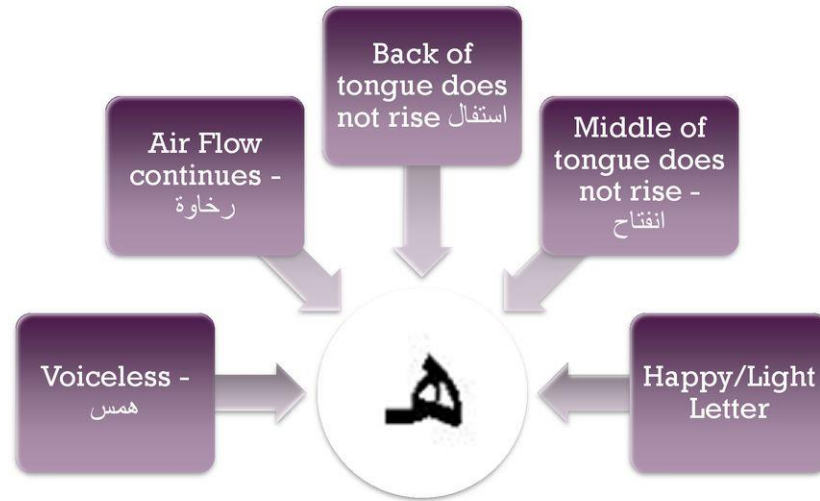
+ مخرج - Bottom of the throat.



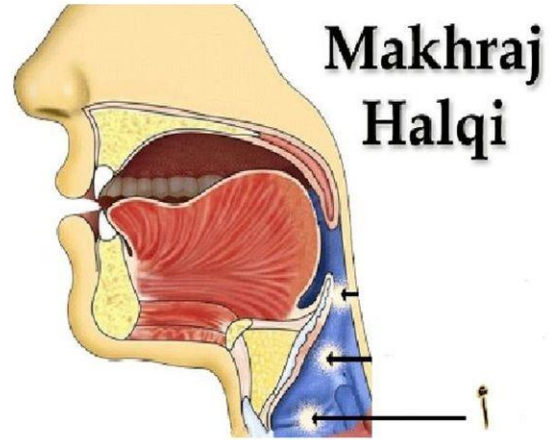
Makhraj
Halqi

أقصى الحلق

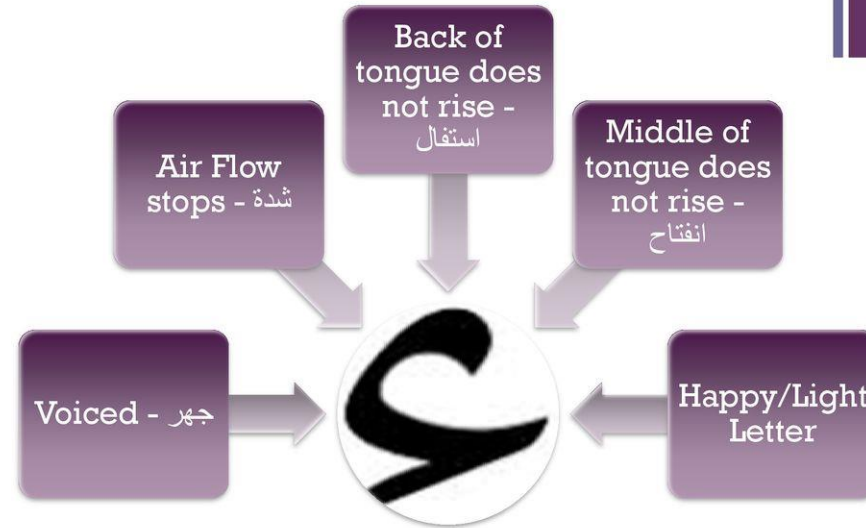
+
SIFAAT OF ه



+ مخرج - ء



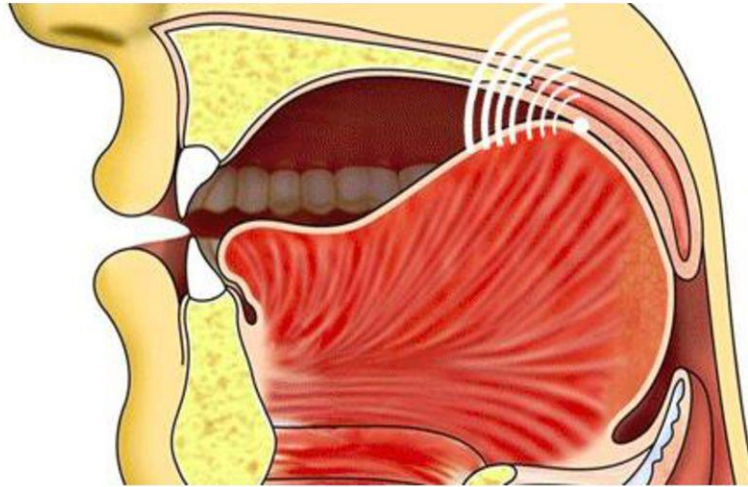
+ SIFAAT OF ء



The background features a large, stylized Arabic calligraphic letter 'س' (S) in shades of orange and yellow on the left. On the right, there is a logo for 'Arabic Academy' with 'Arabic' in blue calligraphy and 'Academy' in a yellow cursive font. A central purple rectangular box contains the text 'LETTERS OF THE TONGUE' in white, uppercase, serif font. The word 'TONGUE' has a small pink cross-like symbol above the letter 'O'.

LETTERS OF THE
TONGUE

+ ق - Makhraj



Extreme Back of the tongue rises and touches the soft palate above it.

+ MAKHRAJ & SIFAAT OF ق & ك

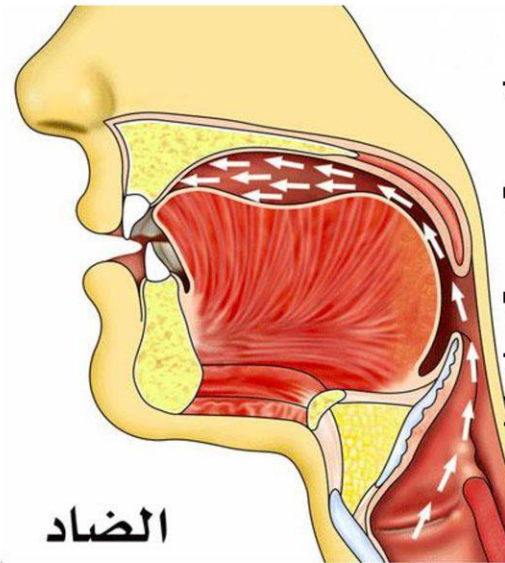
ق

- Extreme back of the tongue rises and touches the **SOFT** palate
- Voiced - جهر
- Air Flow stops at Makhraj - شدة
- Back of tongue rises - استعلاء
- Middle of tongue does not rise - انفتاح
- Qalqala

ك

- Back of the tongue rises and touches **HARD** palate
- Voiceless - همس
- Air flow stops at Makhraj - شدة
- Back of tongue does not rise - استفال
- Middle of tongue does not rise - انفتاح
- Can NOT have qalqala

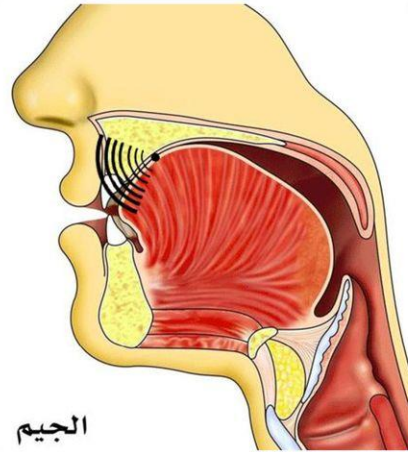
+ Makhraj of ض



When the back edge of the Tongue curls up and touches The gums of the upper five Molars.

+ Makhraj of Jeem

ج



+

2. Voiced –

جهر

3. Airflow stops at Makhraj - شدة



4. Back of Tongue does

Not rise - استفال

5. Middle of Tongue does

Not rise - انفتاح

6. Qalqalah

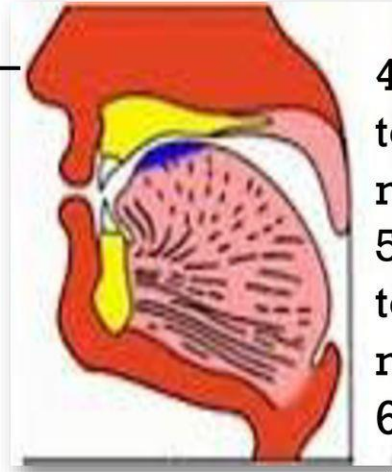
ج
Raising the middle of the tongue and touching the hard palate above it

+

2. Voiceless –

همس

3. Airflows
through
Makhrāj –
رخاوة



4. Back of
tongue does
not rise – استفال
5. Middle of
tongue does
not rise - انفتاح
6. Spreading
of sound

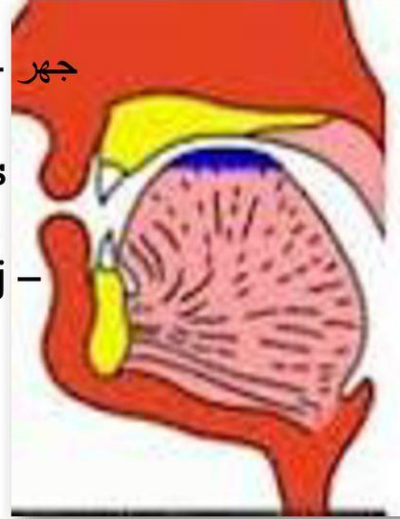
ش

Raising the middle of the tongue towards
the hard palate

+

2. Voiced - جهر

3. Airflows through Makhraj - رخاوة



4 Back of the tongue does not

rise - استفال

5. Middle of tongue does not rise - انفتاح

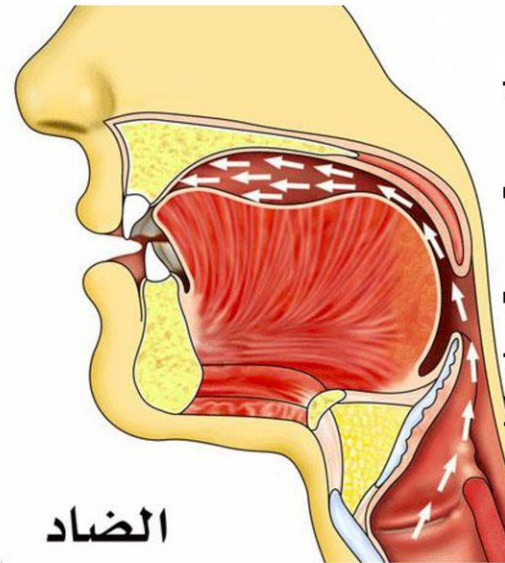
6. Softness in sound -

اللين

ي

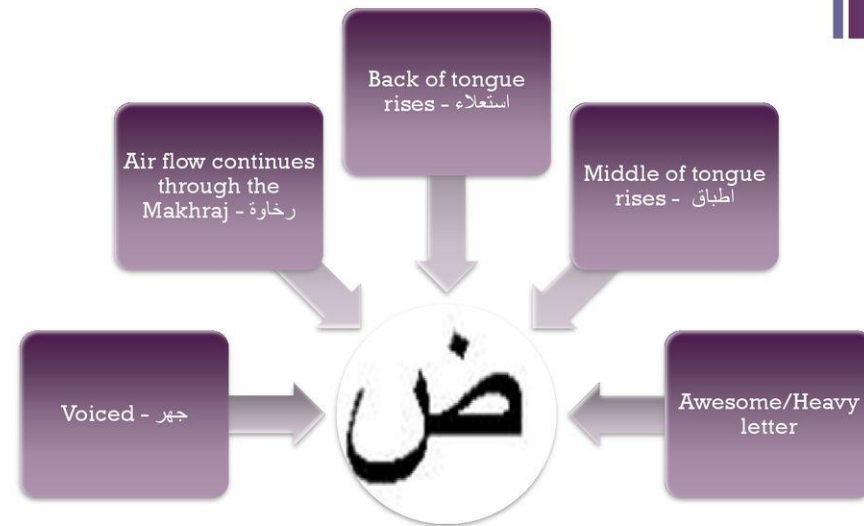
Raising the tongue to the roof of the mouth

+ Makhraj of ض

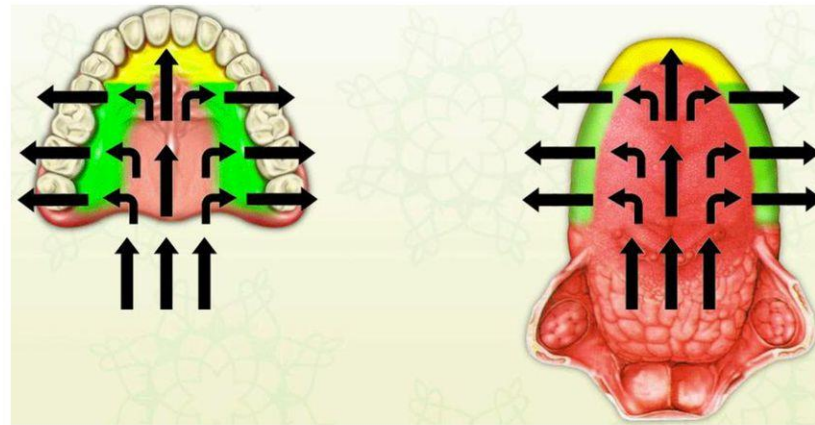


When the back edge of the Tongue curls up and touches The gums of the upper five Molars.

+ Characteristics of Daawd ض



+ Placement of Tongue – Sound is Distributed towards Right and Left, NEVER Front Teeth

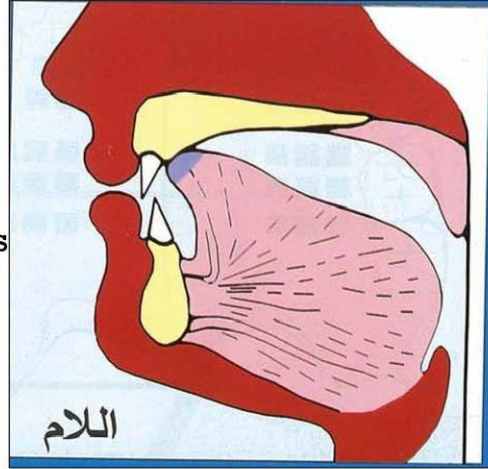




+

Voiced - جهر

Air flow takes
Detour - توسط



Back of
tongue does
not rise -

استفال

Middle of
tongue does
not rise -

انفتاح

Makhraj of
Laam shifts
during
pronunciation

ل – tip of tongue touches the gums of the front top 8 teeth